



TK International  
020 7794 8700  
www.t-k.co.uk

Residential Sales  
Residential Lettings  
Property Management

Sales Office:  
9 Heath Street  
Hampstead  
London NW3 6TP  
E: sales@t-k.co.uk

Lettings Office:  
16-18 Heath Street  
Hampstead  
London NW3 6TE  
E: lettings@t-k.co.uk

tk.international  
TK International  
TK International

Est.  
1998



## **Holne Chase Hampstead Garden Suburb N2**

A beautifully refurbished family home in the heart of the Hampstead Garden Suburb. The property comprises three reception rooms, kitchen/breakfast room, six bedrooms, four bathrooms and a study.

This detached house further benefits from a carriage driveway and a wonderfully kept rear garden. The house is located conveniently to the amenities of Hampstead, Highgate and Golders Green and the open spaces of Hampstead Heath. Offered on an unfurnished basis.

EPC: E

Council Tax Band: H

Deposit: 6 Weeks Rent

**£2,250 Per Week**

**SOLE AGENT**



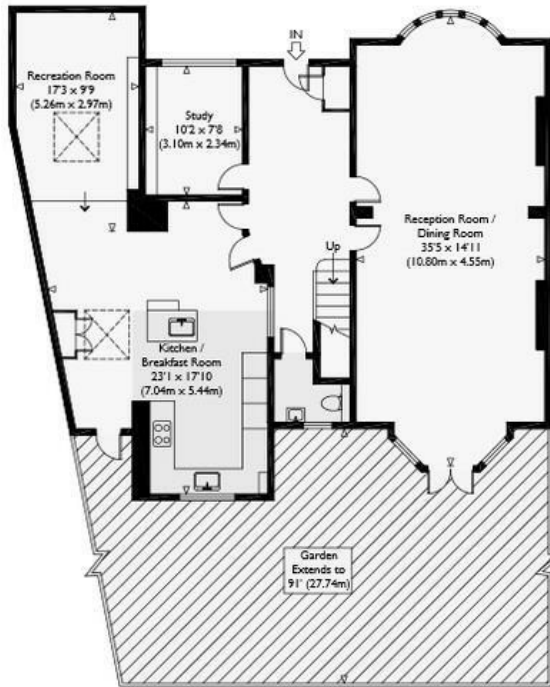




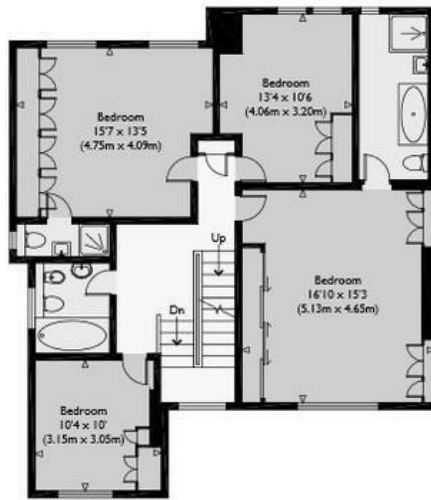


## Holne Chase

Approximate Gross Internal Floor Area : 2751 sq ft / 255.6 sq m (Excluding Restricted Height Area)  
 Approximate Gross Internal Floor Area : 2914 sq ft / 270.7 sq m (Including Restricted Height Area)



Ground Floor



First Floor



Second Floor

Illustration for identification purposes only, measurements are approximate, not to scale.